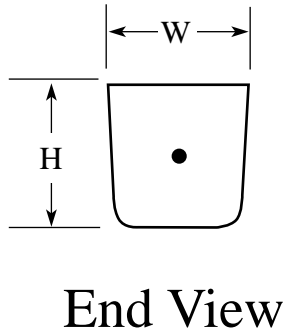
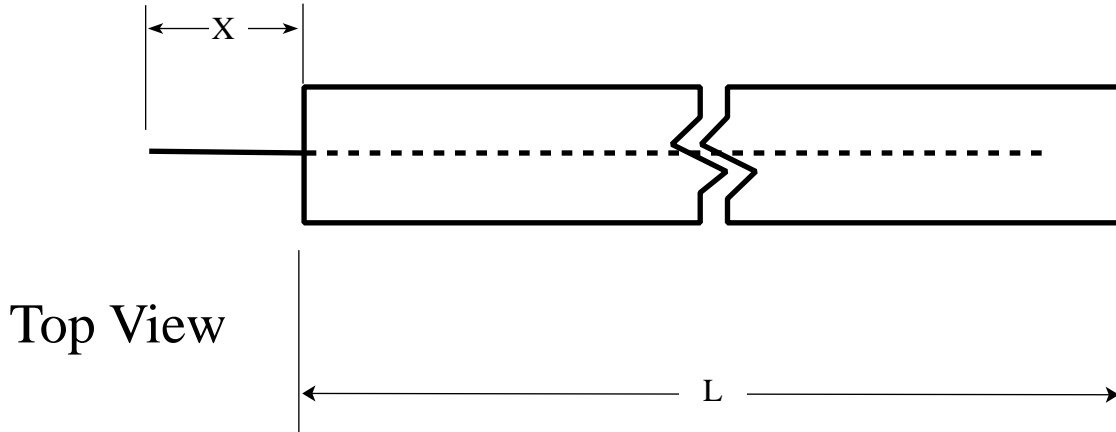


**M&M Industries, Inc.**  
 800 West Front Street, Chester, PA 19013  
 Tel (610) 447 0663 ~ Fax (610) 447 0994

P.O. Box 1439, Amite LA 70422  
 Tel (985) 748 6651 ~ Fax (985) 748 6671

**ZINC ANODE**

*Ground anodes*



*ASTM-B-418 II*

<b>Zinc alloy</b>	Fe	0.0014% max.
	Pb	0.003% max.
	Cu	0.002% max.
	Al	0.005% max.
	Cd	0.003% max.
	Zn	Remainder

Wire (core) sizes vary with anode sizes.  
 Other sizes available

Part No.:	ZGA-1	ZGA-3	ZGA-5	ZGA-6	ZGA-9	ZGA-12	ZGA-18	ZGA-24	ZGA-30	ZGA-48	ZGA-60	
<b>Dimensions</b>	L	10"	6"	10"	12"	18"	24"	36"	24"	60"	48"	60"
	X	1"	1"	1"	1"	1"	1½"	1½"	1½"	1½"	1½"	2"
	W	5/8"	1.4"	1.4"	1.4"	1.4"	1.4"	1.4"	2"	1.4"	2"	2"
	H	¾"	1.4"	1.4"	1.4"	1.4"	1.4"	1.4"	2"	1.4"	2"	2"
Nominal weight	1 Lbs.	3 Lbs.	5 Lbs.	6 Lbs.	9 Lbs.	12 Lbs.	18 Lbs.	24 Lbs.	30 Lbs.	48 Lbs.	60 Lbs.	

Not to scale

**THE RIGHT PRODUCT • THE RIGHT TIME • THE RIGHT PRICE**