

# M&M Industries, Inc.

800 West Front Street, Chester, PA 19013

Tel (610) 447 0663 ~ Fax (610) 447 0994

P.O. Box 1439, Amite LA 70422

Tel (985) 748 6651 ~ Fax (985) 748 6671

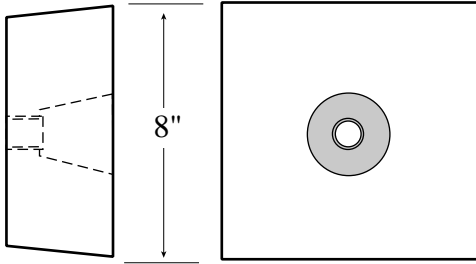
## MAGNESIUM CONDENSER ANODES

Part  
Number

Nominal Weight  
and Size of  
Magnesium Anode

Cast-in  
Galvanized  
Steel Core

Method of  
Attachment



**7.5S**

**7.5 Lbs**  
8" x 8" x 2"

¾' pipe

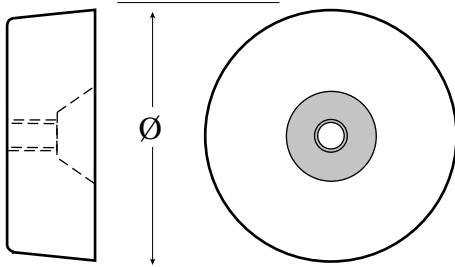
Bolting

**15S**

**15 Lbs**  
8" x 8" x 4"

¾' pipe

Bolting



**1R5**

**1.2 Lbs**  
5" Ø x 1" Thick

½' pipe

Bolting

**2R5**

**2.4 Lbs.**  
5" Ø x 2" Thick

½' pipe

Bolting

**2R8**

**6 Lbs.**  
8" Ø x 2" Thick

½' pipe

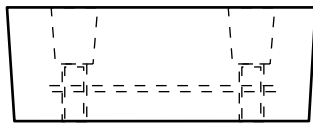
Bolting

**4R6**

**6 Lbs.**  
6" Ø x 4" Thick

¾" pipe

Bolting



**H-51B**

**51 Lbs**  
14½" x 8½" x 8"

¾"

Bolting

**H-100B**

**100 Lbs**  
27" x 8½" x 8"

¾"

Bolting

**M3X22**

**9 Lbs.**  
3" Ø x 22" Long

5/8"

Thread

**M3X30**

**12 Lbs.**  
3" Ø x 30" Long

¾"

Thread

**M3X60**

**24 Lbs.**  
3" Ø x 60" Long

¾"

Thread

Ø = Diameter

**THE RIGHT PRODUCT • THE RIGHT TIME • THE RIGHT PRICE**